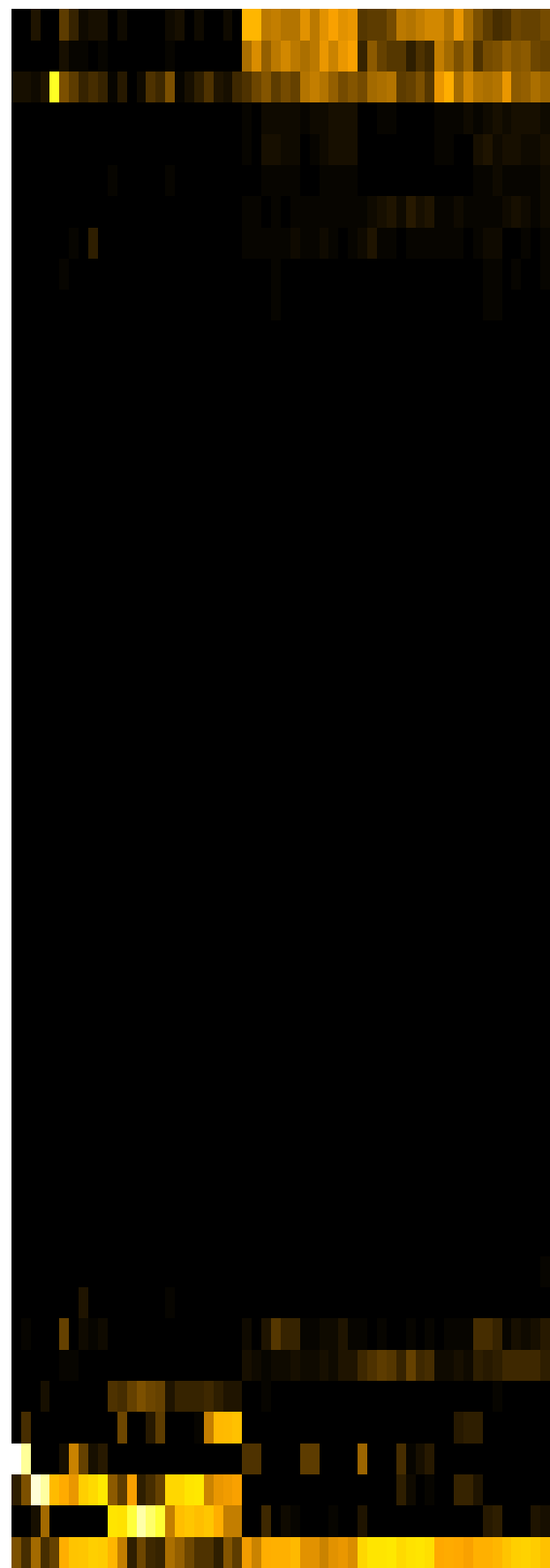
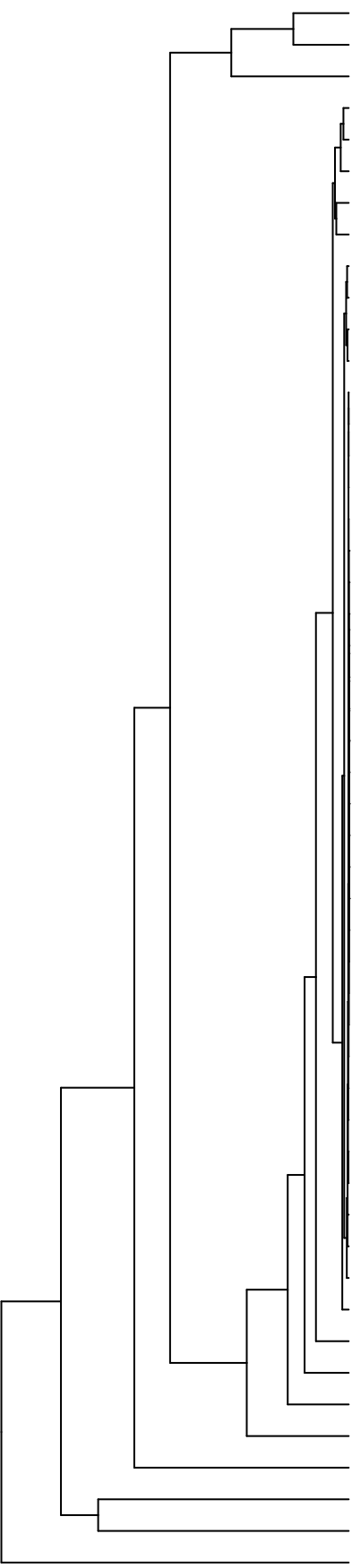


Group006  
 J Final -PMA  
 G Final -PMA



- Veillonella
- Haemophilus
- Neisseria
- Eikenella
- Aggregatibacter
- Gemella
- Schaalia
- Rothia
- Campylobacter
- Leptotrichia
- Porphyromonas
- Prevotella
- Lachnoanaerobaculum
- Catonella
- Lancefieldella
- Lautropia
- Saccharibacteria\_(TM7)\_[G-6]
- Acidovorax
- Capnocytophaga
- Lachnospiraceae\_[G-2]
- Acinetobacter
- Serratia
- Novosphingobium
- Leifsonia
- Agrobacterium
- Sphingobium
- Riemerella
- Microbacterium
- Siccationidurans
- Saccharibacteria\_(TM7)\_[G-5]
- Phyllobacterium
- Cutibacterium
- Absconditabacteria\_(SR1)\_[G-1]
- Oribacterium
- Saccharibacteria\_(TM7)\_[G-1]
- Delftia
- Solobacterium
- Alloprevotella
- Actinomyces
- Stomatobaculum
- Pseudomonas
- Staphylococcus
- Fusobacterium
- Granulicatella
- Salmonella
- Raoultella
- Enterobacter
- Klebsiella
- Citrobacter
- Streptococcus

Genus

- F28914.S599
- F28914.S467
- F28914.S697
- F28914.S609
- F28914.S612
- F28914.S441
- F28914.S443
- F28914.S445
- F28914.S465
- F28914.S442
- F28914.S446
- F28914.S470
- F28914.S310
- F28914.S147
- F28914.S146
- F28914.S311
- F28914.S150
- F28914.S152
- F28914.S283
- F28914.S282
- F28914.S285
- F28914.S287
- F28914.S305
- F28914.S312
- F28914.S123
- F28914.S122
- F28914.S128
- F28914.S126

Samples